



Self Priming Centrifugal Pump w/Autostart

Model T4A60S-F3L

Size 4" x 4"


35 MT

Total Head		Capacity of Pump in U.S. Gallons per Minute (GPM) at Continuous Performance				
P.S.I.	Feet					
56.4	130	180	180	180	180	180
52.0	120	310	350	350	350	350
43.3	100	372	505	595	670	670
34.7	80	385	515	615	725	790
26.0	60	390	520	622	735	800
17.3	40	392	528	628	745	810
Suction Lift		25'	20'	15'	10'	5'

PUMP SPECIFICATIONS

Size: 4" x 4" (101 mm x 101 mm) NPT - Female.

Casing: Gray Iron 30.

Maximum Operating Pressure 95 psi (655 kPa).*

Semi-Open Type, Two Vane Impeller: Ductile Iron 65-45-12.

Handles 3" (76.2 mm) Diameter Spherical Solids.

Impeller Shaft: Stainless Steel 17-4 PH.

Replaceable Wear Plate: Carbon Steel ASTM A36.

Removable Adjustable Cover Plate: Gray Iron 30; 37 lbs. (17 kg).

Seal Plate: Gray Iron 30.

Seal: Cartridge Type, Mechanical, Oil-Lubricated, Double Floating, Self-Aligning Silicon Carbide Rotating and Stationary Faces. Stainless Steel 316 Stationary Seat. Fluorocarbon Elastomers (DuPont Viton® or Equivalent). Stainless Steel 18-8 Cage and Spring. Maximum Temperature of Liquid Pumped 160°F (71°C).*

Flap Valve: Neoprene w/Steel Reinforcement.

Shaft Sleeve: Alloy Steel 4130.

Intermediate: Gray Iron 30.

Radial Bearing: Open Single Row Ball.

Thrust Bearing: Open Double Row Ball.

Bearing and Seal Cavity Lubrication: SAE 30 Non-Detergent Oil.

Flanges: Gray Iron 30.

Gaskets: Buna-N, Compressed Synthetic Fibers, PTFE, Vegetable Fiber, Cork and Red Rubber.

O-Rings: Buna-N.

Hardware: Standard Plated Steel.

Brass Pressure Relief Valve.

Bearing and Seal Cavity Oil Level Sight Gauges.

Standard Equipment: Hoisting Bail. 90° Discharge Elbow. Strainer.

[Single Ball Type Float Switch.](#)**

****50 Ft. (15 m) Standard Length; Dual Switches and Alternate Cable Lengths Available From the Factory.**

Optional Equipment: Battery. G-R Hard Iron Impeller and Seal Plate. Hardened Steel Wear Plate. High Speed (55 MPH/89 KM/H) Single Axle Pneumatic-Tired Wheel Kit w/wo DOT-Approved Lights and Electric Brakes. [Tandem Axle Over-the-Road Trailer.](#) EPS w/Submersible Transducer Liquid Level Sensor (50 Ft. [15 M] Cable Standard, Alternate Lengths Available).

*Consult Factory for Applications Exceeding Maximum Pressure and/or Temperature Indicated.



ENGINE SPECIFICATIONS

Model: Deutz D914L3.

EPA Tier: Interim Tier 4.

Type: Three Cylinder, Four Cycle, Air Cooled Diesel Engine.

Displacement: 197.4 Cu. In. (3,24 Liters).

Lubrication: Forced Circulation.

Air Cleaner: Oil Bath.

Fuel Tank: 61 U.S. Gallons (231 Liters).

Full Load Operating Time: 31.2 Hours.

Starter: 12 Volt Electric.

Engine Control Features: High Oil Temperature, Low Oil Pressure, V-Belt, Alternator and Start Failure Safety Shut Down Switches/Indicators. Fuel Level Gauge. Throttle Control. Autostart Instrument Panel Includes: Temperature Gauge, Oil Pressure Gauge, Ammeter, Hourmeter, Tachometer, Manual/Stop/Auto Key Switch, 15 Amp Fuse, Audible Startup Warning Delay. Muffler w/Guard and Weather Cap.

DEUTZ PUBLISHED PERFORMANCE:

Maximum Gross Continuous B.H.P.

54.9 (41 kW) @ 2300 RPM



GORMAN-RUPP PUMPS

www.grpumps.com

Specifications Subject to Change Without Notice

Printed in U.S.A.

Specification Data

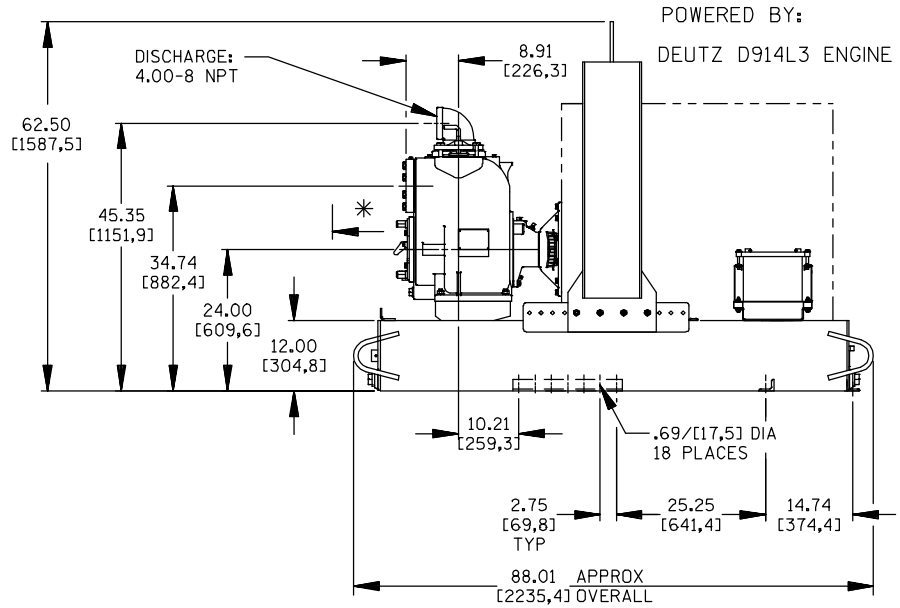
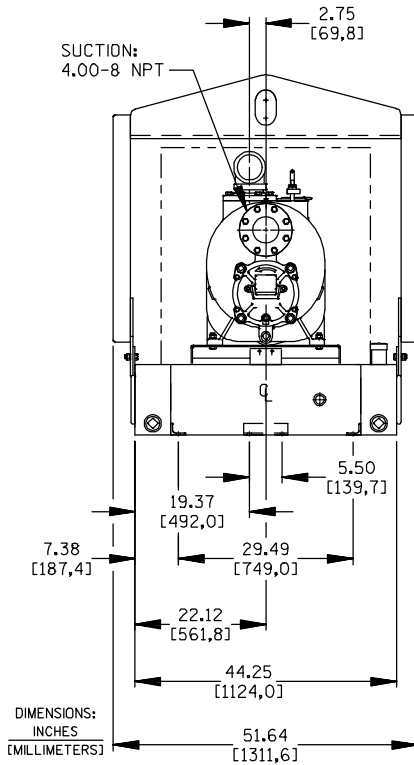
SECTION 45, PAGE 1244

APPROXIMATE DIMENSIONS and WEIGHTS

NET WEIGHT: 2390 LBS. (1084 KG.)
 SHIPPING WEIGHT: 2694 LBS. (1222 KG.)
 EXPORT CRATE SIZE: 231 CU. FT. (6,5 CU. M.)

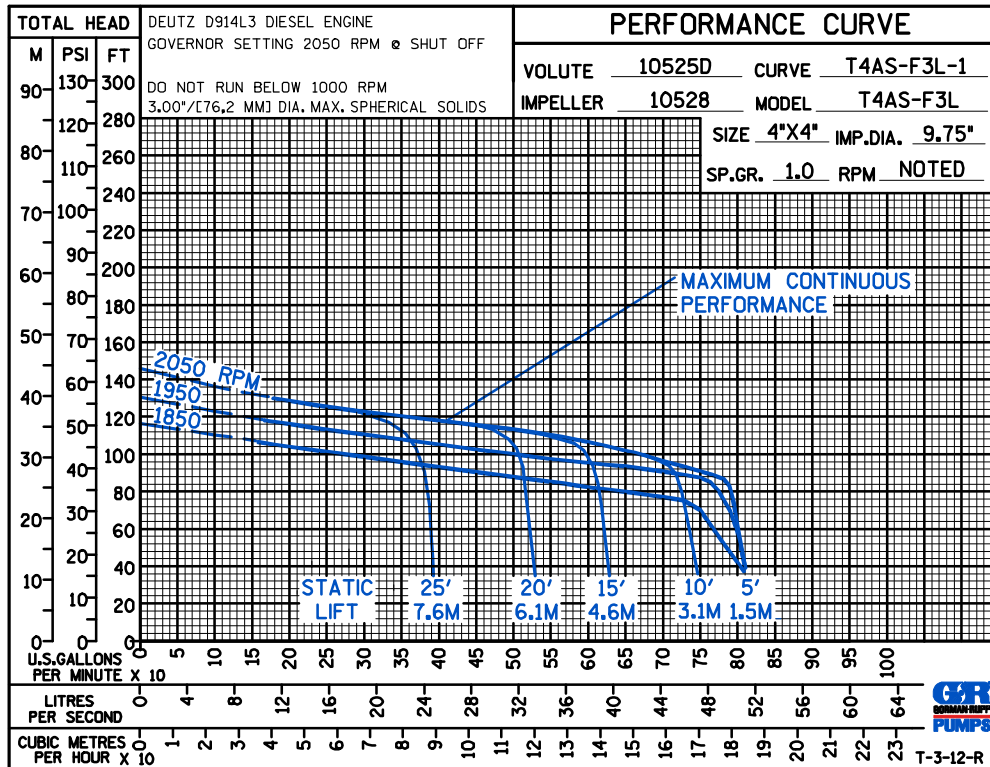
SKID BASE

2-WHEEL



* 18.00/[457,2] RECOMMENDED FOR REMOVAL OF BACK COVER PLATE
 9.00/[228,6] REQUIRED FOR REMOVAL OF BACK COVER PLATE

PERFORMANCE
 BASED ON
 WATER



GORMAN-RUPP PUMPS

www.grpumps.com

Specifications Subject to Change Without Notice

Printed in U.S.A.